

Hilton

Los Angeles Airport

Hilton LAX Airport - Valet Parking

Please print or bring your confirmation email via smartphone as proof of your reservation.

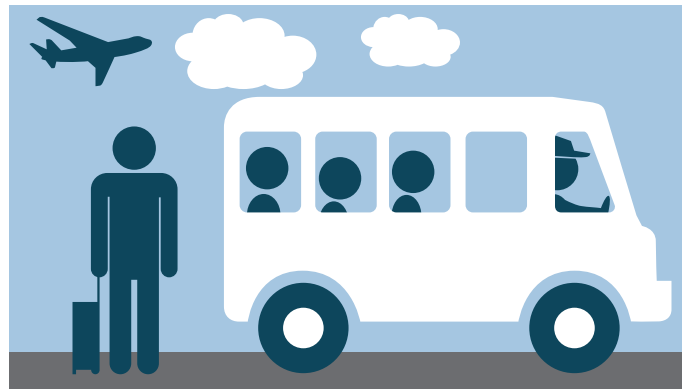
To make sure you are able to park at Hilton LAX, simply follow these steps.

- 1** Upon arrival, drive to the entrance of the hotel and advise the valet that you are an airport parking guest – and present your confirmation email, either printed or on your smart phone. In return, the valet will provide you with a parking ticket. Please retain.

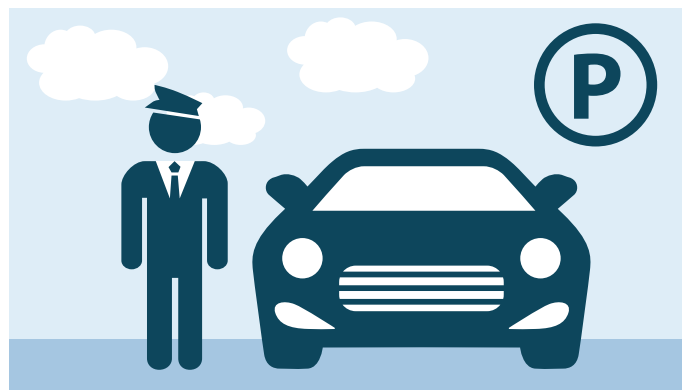


- 2** Board our airport shuttle on the front drive, departing every 20-25 minutes - 24 hours a day.

Upon your return: If you would like to have your vehicle ready and waiting for you, once you are on the shuttle, please text your valet ticket number (only) to **(424) 732-2923**.



- 3** When you return to the hotel to retrieve your vehicle, please present your confirmation email and valet ticket to the cashier on the front drive.



When You Return To LAX

Retrieve your luggage on the **lower level**. The **hotel shuttle pick-up area** is located on the **Upper/Departures Level** and is identified by **RED Curbside Pylons**. Please wait in this area and one of our white Hilton LAX hotel shuttles will be by shortly to bring you back to the hotel.



Self-parking height clearance is 5.11 ft. Any vehicles beyond that height (up to 6.2 ft.) must valet park. Our parking structure cannot accommodate oversized vehicles. If your vehicle is larger than 18.6 ft. long, 6.75 ft. wide, and 6.2 ft. high, it will not fit into our spaces. For reference, these dimensions are similar to a Chevrolet Suburban.